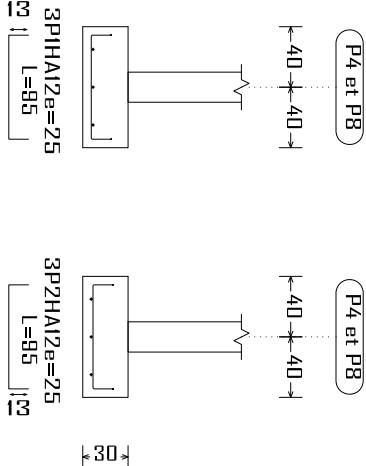
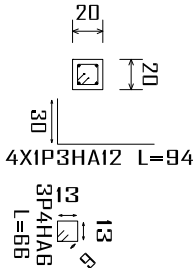


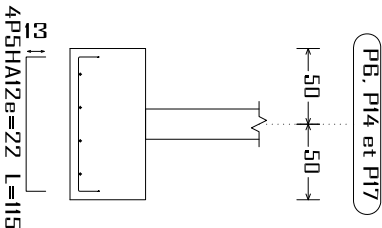
P4 et P8



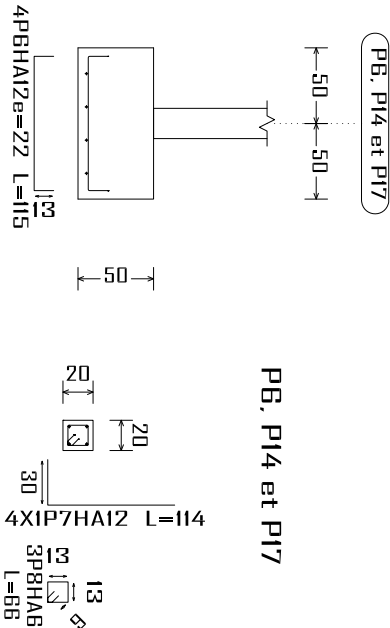
P4 et P8



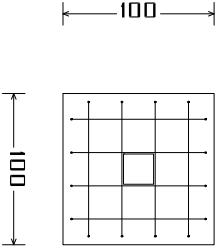
P6, P14 et P17



P6, P14 et P17



Récapitulatif Acier Fondations	Long. total (m)	Poids+10% (kg)	Total
Plan de ferrailage fondation			
Fe E400			
HAB	37.4	9	
HAB	246.3	107	
HA12	426.9	417	
HA16	149.9	260	
			793



Élément	Pos.	Diam.	No.	Long. (cm)	Total (cm)	Fe E400 (kg)
P4=P8	1	HA12	3	86	286	2.5
	2	HA12	3	95	285	2.5
	3	HA12	4	94	376	3.3
	4	HAB	3	66	198	0.4
Total+10% (x2):					9.6	
P6=P14=P17	5	HA12	4	115	460	4.1
	6	HA12	4	115	460	4.1
	7	HA12	4	114	456	4.0
	8	HAB	3	66	198	0.4
Total+10% (x3):					13.9	
HAB:					2.5	
HA12:					58.4	
Total:					80.9	